

# HouseMate

THE SMART WAY TO  
CONTROL YOUR  
WORLD

BED CONTROLS

DOOR OPENER

TV/DVD

WINDOWS

LIGHTS &  
SOCKETS

INTERCOM

MUSIC SYSTEM



Imagine being able to do everything from one device: Turn on your room lights and close the curtains. Change channels on your TV and turn up the heating. Answer a phone call and send some texts. Browse the Internet, play some music or watch YouTube.

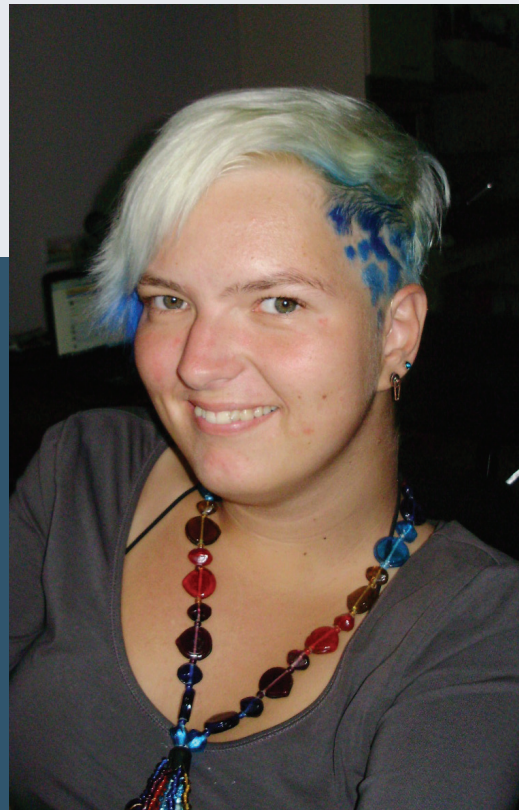
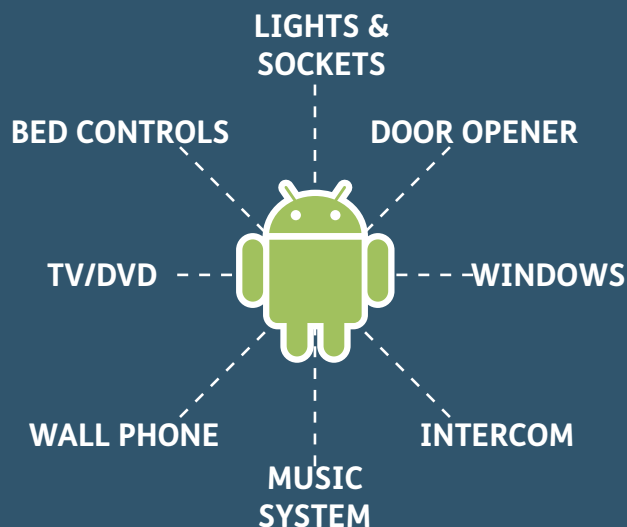
**HouseMate** hardware in combination with the **ClickToPhone** App enables you to do this and much more. Read on and discover why this solution, together with an Android smart-phone or tablet is **the smart way to control your world.**



Unique Perspectives  
Limited

# HOW DOES IT WORK?

HouseMate/ClickToPhone is a combined hardware/app solution that enables a switch user to fully control their Android smart-phone or tablet and use it to operate other equipment in their home or work environment using InfraRed or Z-Wave signals.



Karin van Dijk - 'Now everyone can use a phone'

## TELL ME ABOUT THE HARDWARE

The hardware is controlled using the **built-in switch** or by connecting an **external switch** or joystick. It can also be interfaced to R-Net, DX and Curtis wheelchair control systems.

It is powered by a rechargeable Li-Ion battery and contains a powerful omni-directional **InfraRed transmitter** and a Bluetooth radio module.

The hardware communicates the switch presses to the app on the smart-phone. The app, called ClickToPhone, uses intuitive scanning techniques and a rich graphical interface to present different options to the user. If the user chooses an **environmental control** option then ClickToPhone will instruct the HouseMate hardware to transmit the corresponding InfraRed code.

The Bluetooth connection between the phone and HouseMate is reliable and fast. When the user presses their switch the phone wakes up immediately and is ready for use.

HouseMate can be fitted with a radio frequency **Nurse call pager**. This alarm can be activated at anytime by pressing the switch for a defined period of time. Importantly this feature is independent of the smart-phone and Bluetooth connection.

A further possibility is the control of **Z-wave** devices. This requires the installation of a Z-wave enabled router such as a Vera 3 and Z-wave appliances such as sockets, light switches, thermostats etc. The phone communicates with the Vera using Wifi which in turn communicates with the appliances using Z-wave.

# FUNCTIONAL BLOCK DIAGRAM



- - - - - Infrared
- - - - - Bluetooth
- - - - - Wired connection
- - - - - Wifi / Z-wave (optional)



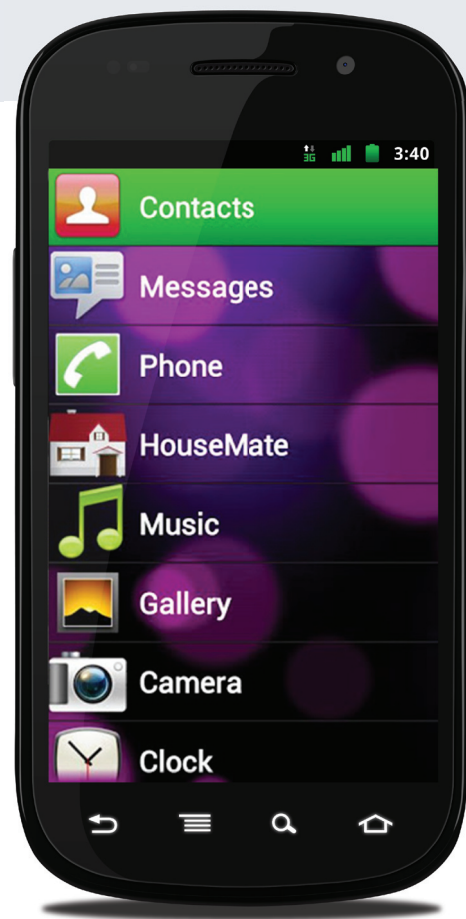
# Click to Phone

## TELL ME ABOUT THE APP

**ClickToPhone** is an Android app that has been specially designed for **switch access** and can be downloaded free from Google play. It will run on any device running Android 2.2 or higher.

ClickToPhone is a comprehensive user interface that simplifies and integrates the functions of a smart-phone together with environmental control seamlessly into one package.

With a single switch a user can make calls, send and receive texts, view pictures, play music, access the internet and much more.



## WHAT CAN I DO WITH IT?



### USE IT AS A MOBILE PHONE...

Wake up the phone, answer and make calls, send and receive SMS text messages. Manage and edit contacts. View missed calls and check your voice mail.



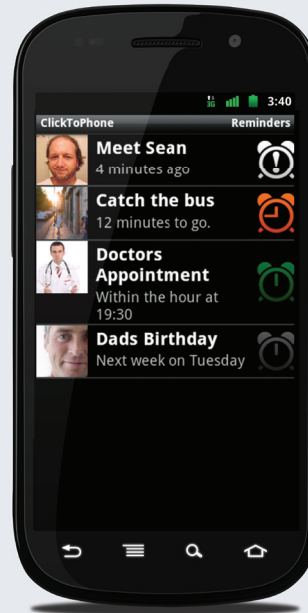
### USE IT AS AN ENVIRONMENTAL CONTROL...

16 grids fully customizable for size and content. Comprehensive set of 600+ symbols with ability to import photographs and other pictures. 250 IR codes can be recorded into HouseMate or choose from a database of commonly used codes.



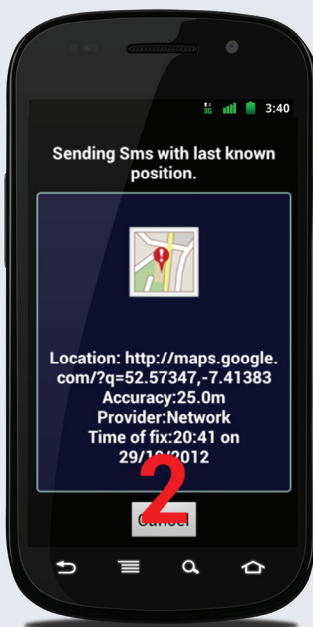
## USE IT FOR VOICE OUTPUT...

ClickToPhone can be used to speak a message using the text-to-speech feature. A variety of voices in different languages are available from Google play and voice output can also be used for auditory scanning and prompts.



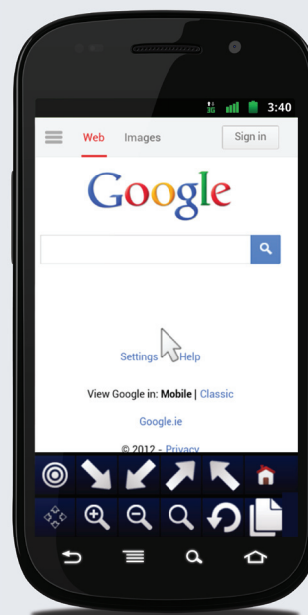
## USE IT AS A PERSONAL ORGANISER...

The Reminders feature can be used to remind a user of upcoming events using symbols, photos and text. Reminders can be scheduled to go off at intervals before an event to ensure that a user has plenty of time to plan and prepare.



## USE IT FOR SECURITY...

Besides HouseMate's ability to activate a nurse call system, ClickToPhone offers additional security by being able to send an SMS to a pre-defined number with a link to a Google map showing the user's last known location.



## USE IT FOR FUN AND ENJOYMENT...

Switch accessible MP3 player? Switch accessible camera? Switch accessible Internet? Yes, yes and yes! And if there is something you can't do within ClickToPhone you can download and control any app thanks to HouseMate's support of Android's HID profile.

# IS IT EASY TO SETUP?

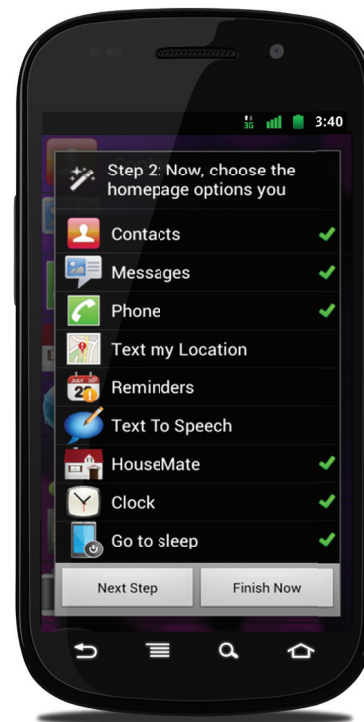
After installing from Google Play, ClickToPhone's wizard will guide you through the setup procedure. You will be asked to choose one of **four different user levels**, the contents of the home page, the scanning method and other commonly used options. The final step of the wizard guides you through pairing your phone with your hardware and making the first connection.



Further **scanning options**, editing of the environmental control grids, recording of InfraRed codes and other performance adjustments can be made at any stage using ClickToPhone's easy to use and categorised list of preferences. Expert users have authority to edit settings by themselves using scanning.

Each setup, or project, including any recorded InfraRed signals can be saved to the phone's **SD card** and backed up to another phone, computer or even remotely over the internet.

You can evaluate ClickToPhone freely and without any hardware by setting the scanning method to "Tap-the-screen". This allows you to use the screen as one big switch or the left click of a connected Bluetooth mouse pointer.



SCAN ME



DOWNLOAD  
THE  
ClickToPhone  
ANDROID  
APP

# WHAT ARE THE KEY FEATURES?

## Hardware features

- Control of any device that can be operated by InfraRed signals including light switches, power sockets, bed controls and door openers.
- Powerful InfraRed learn/transmit hardware. Single codes, toggle codes, macros and safety codes can be recorded.
- Pre-recorded database of common InfraRed signals including GEWA, Possum, Siemens KNX, Feller BeamIt, UPC and SKY.
- Control of Z-wave devices over Wifi using a Vera Z-wave router.
- Can be fitted with an internal radio frequency nurse call pager.
- Single switch, two switch and joystick inputs.
- Interface cables for R-Net and DX wheelchair control systems.
- Direct wireless control from a compatible Curtis Instruments joystick.
- Long-life rechargeable Li-Ion battery with mini USB charger.
- Audible low battery warning, Bluetooth connection, InfraRed transmit and charging status LEDs.
- Control of an external device using relay output.

## Software features

- Primary functions: Wake-up, answer/make calls, send/receive texts, environmental control.
- Secondary functions: Music player, photo album, camera, internet, reminders, location.
- Scanning options: Automatic, short click, two switch, adjustable scanning speed, acceptance time, auditory scanning and many other programmable options.
- Voice output for text-to-speech, auditory scanning and read-out of SMS messages. Voice recognition for environmental control.
- Word prediction and word anticipation. Localised into different languages.
- Control over all Apps on Google Play guaranteed using HouseMate's HID mouse and an Android device supporting the HID (Human Interface Device) profile.
- ClickToPhone can be downloaded free from Google play with automatic updating as new versions become available.
- Can be installed on any device running Android 2.2 or higher including TV dongles. This allows the use of large HDMI screens for people with visual impairments.